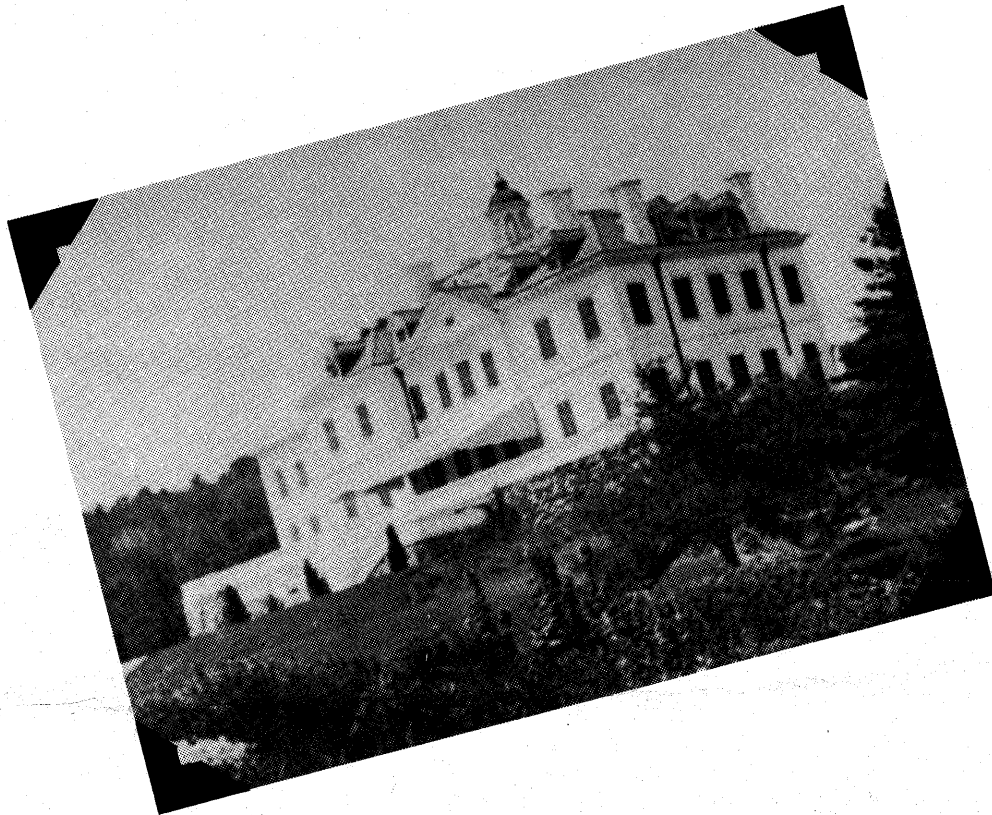


# **Edith Wharton** **AT THE MOUNT**

A Conference of The  
Edith Wharton Society



June 7 - 10, 1987

Lenox, Massachusetts

Co-sponsored by The Edith  
Wharton Restoration,  
The Mount

In celebration of the 125th Anniversary  
of the birth of Edith Wharton

## **PROGRAM**

**All major speakers and evening events will take place at The Seven Hills Inn. Sessions of short papers will be held at The Mount.**

Sunday Evening, June 7th

- 5-6 p.m. Welcoming Cocktail Party
- 6-7 p.m. Dinner
- 7-7:30 p.m. Katherine Joslin, Iowa State Univ. Keynote Address, "Edith Wharton at 125."
- 7:30-8:30 p.m. R.W.B. Lewis, Yale Univ. "Edith Wharton's Transatlantic Crossings"
- 9:30-10:30 p.m. *Songs from the Heart: Edith Wharton*, an original film from Downtown Productions produced by John MacGruer and Mickey Friedman

Monday Morning, June 8

- 8-9 a.m. Breakfast
- 9-9:30 a.m. Thomas S. Hayes, Edith Wharton Restoration, "The Mount, Past and Present"
- 10-11 a.m. Guided tours of The Mount and Gardens

**SESSIONS - 11-12:15 A.M.**

① — **EDITH WHARTON: THE ARTIST IN LIFE, THE MUSE IN FICTION.** Moderator, Dale Flynn, Univ. of California, Davis DRAWING ROOM

1. <sup>Woman as Muse</sup> "The Artist and His Muse in Wharton's Short Stories" Dale Flynn, Univ. of California, Davis
2. <sup>Secret Garden</sup> "The Authorization of Self as Artist in *A Backward Glance*, Jean Rohloff McRae, Univ. of Wisconsin
3. "Invisible Woman: The Politics of Display in *The House of Mirth*." Henrietta Lazaridis Power, Univ. of Pennsylvania

**II - ROMANTICISM IN WHARTON** Moderator, Katherine Joslin, Iowa State Univ., LIBRARY

1. "Romanticism in the Fiction of Wharton: A Concept of Continuity," Gloria Stephenson, Univ. of Wisconsin-Platteville
2. "Romanticizing the Commonplace: The Ennobling Power of Art in *Old New York*," Terri O. Matthews, Univ. of Alabama at Birmingham
3. "The Rock Amid the Waters: Wharton's Romanticism in *The Spark*" Christopher Sten, The George Washington Univ.

**III - LANGUAGE AND SILENCE** Moderator, Frederick P.W. McDowell, Univ. of Iowa, DINING ROOM

1. "Silence and The Age of Innocence," Alfred Bendixen, Barnard College
2. "Speaking a Language Peculiar to the Mind: Silence and Repression in *The House of Mirth* and *Ethan Frome*," Shirley M. Jordan, Univ. of Cincinnati
3. "The Debasing of Language and the Men of *The House of Mirth*," Martha Billips Turner, Univ. of Kentucky

IV - WHARTON AND MODERNISM Moderator, Alan Price, Pennsylvania State Univ. BOUDOIR

1. "An Artist's Secret Affinities": Wharton as Modernist," David A. Godfrey, Iowa State Univ.
2. "Prufrock, Pinned or *The Children* as Wharton's Critique of Mainstream Modernism," Judith L. Sensibar, Arizona State Univ.
3. "Who Killed *The Children*? The Bibliographer as Sherlock Holmes," Kristin O. Lauer, Fordham Univ.

Monday Afternoon, June 8

12:30-1:30 p.m. Lunch

1:30-2:30 p.m. Cynthia Griffin Wolff, MIT, "Hot Ethan, Cold Ethan"

SESSIONS - 3-5 PM

I SUMMER: ENTRAPMENT OR FULFILLMENT Moderator, Kathy Fedorko, Middlesex County College DINING ROOM

1. "The Haunted Text: Reading the Gothic *Summer*," Kathy Fedorko, Middlesex County College
2. The Awakening of Charity Royall and Edna Pontellier: Individuation in *Summer* and *The Awakening*," Karin Woodruff Jackson, Westbrook College, Portland, Me.
3. "Signs in *Summer*: Words and Metaphors," Peter L. Hays, Univ. of California, Davis.
4. "Wharton and the Family Romance," Dale M. Bauer, Miami Univ. and Pat Sharpe, Simon's Rock of Bard College

II - ITALY IN THE IMAGINATION OF WHARTON, Moderator, Eleanor Dwight, The New School, DRAWING ROOM Library

1. "Peasant Shrines and Palaces: Wharton's Use of Italian Architecture in her Travel Writings and Fiction" (Slides to be shown), Eleanor Dwight, The New School
2. "Italy in Wharton's Fiction," Jane Bowers
3. "Wharton's 'Antiphonal Response' to Walter Pater in *The Age of Innocence*," Edwin Smith
4. "In Morocco," Judith Funston, Michigan State Univ.

III - SEXUALITY IN LIFE AND TEXT: THE IMPACT OF MORTON FULLERTON Moderator, Carol Schoen, Lehman College of CUNY LIBRARY Drawing Room

1. "Unpacking her Treasures: Wharton's 'Mysterious Correspondence' with Morton Fullerton," Clare Colquitt, San Diego Univ.
2. "That other lord': Metaphors of Sexual Awakening in Wharton's Poetry, 1908-1909," Catherine Bancroft, Princeton Univ.
3. "Justice to Anna Leath: A Study in Moral Integrity in *The Reef*," Moira Maynard, Queens College
4. "Asexuality and Power in *The Age of Innocence*," Kathleen Pfeiffer

IV - THE ABSENT MOTHER, Moderator, Annette Zilversmit, Long Island Univ. BOUDOIR

1. <sup>Missing Mother</sup> Narcissism in *The House of Mirth*," Joan Lidoff, Univ. of Texas at Austin
2. "Edith Wharton: Gender and Creativity," Gloria C. Erlich, Princeton Forum
3. "The Daughter's Recompense: Lily's Moral Development in *The House of Mirth*," Cindy Weinstein, University of Calif., Berkeley
4. "Naming the Nameless Horrors': Distinctions in Wharton's Fiction Between Mothered and Motherless Heroines," Marilyn Hoder-Salmon, Florida International Univ.

Monday Evening, June 8

- 5-6 p.m. Cash Bar
- 6-7 p.m. Dinner
- 7-7:30 p.m. Margaret B. McDowell, Univ. of Iowa, "Edith Wharton's The Old Maid: Novella/Play/Film"
- 7:30-9:00 *The Old Maid*, Warner Brothers' Film of 1939 with Bette Davis and Miriam Hopkins
- 9-9:30 p.m. Discussion led by Margaret B. McDowell

Tuesday Morning, June 9

- 8-9 a.m. Breakfast
- 9-10 a.m. Elizabeth Ammons, Tufts, Univ., "Multiple Images: Wharton through the Lens of the New Literary History"

SESSIONS - 10:15-12:15 PM

I - WHARTON AND RELIGION, Moderator, Carol Singley, Swarthmore College, DRAWING ROOM

- 1 "Edith Wharton and Walt Whitman," Carol Singley, Swarthmore College
2. "Wharton and Catholicism: Lizzie Hazeldean's Conversion in *New Year's Day*," Robert K. Miller, Univ. of Wisconsin/Stevens Point
3. "'After Holbein': Wharton's Parable of Judgment," Lawrence Berkove, Univ. of Michigan-Dearborn

II - TEACHING WHARTON Moderator, E. Suzanne Owens, Ursuline College, DINING ROOM

1. "Teaching Wharton: *Ethan Frome* in The Age of Deconstruction." E. Suzanne Owens, Ursuline College
2. "Rescuing Lily: Student's Resistance to Lily Bart as Heroine," Miriam Quen Cheikin, Nassau Community College
3. "Wharton's Challenge to Feminist Criticism," Julie Olin-Ammentorp, Univ. of Michigan
4. "Classic Mythology in Uptown New York," Andre Cote, Barry Univ.

III - THE LIMITED VISION, Moderator, Carole Shaffer-Koros, Kean College, LIBRARY

- dily's that fester:*
1. "Wharton's Art of Presence: The Case of Gerty Farish in *The House of Mirth*," William E. Cain, Wellesley College
  2. "Wharton's Sentimentality in *The House of Mirth*," Robin Beaty, Manhattan College
  3. "The Reader as Misogynist in *The Custom of The Country*," Beth Kowaleski-Wallace, Tufts Univ.

IV - DIVORCE, ADULTERY, AND SEXUAL TRANSGRESSIONS Moderator, Carol B. Sapora, Western Maryland College, BOUDOIR

1. "Voices in *The Reef*," Carol B. Sapora, Western Maryland College
2. "The Evolution of The Character of Kate in *Sanctuary* and *The Mother's Recompense*," Eleanor H. Beinswenger, Austin Peau State Univ.
3. "Return and Renunciation: Society and The Possibility of True Union in Three Works," Christine Albers, The Univ. of North Carolina at Chapel Hill.

Tuesday Afternoon, June 9

- 12:30-1:30 p.m. Lunch
- 1:30-2:30 p.m. Marilyn French, Novelist and Critic, "Muzzled Women"

SESSIONS 3-5 PM

I - STRUCTURAL STRATEGIES: THE ART OF WHARTON, Moderator,  
Judith Saunders, Marist College, LIBRARY

1. "The Dynamics of Futility: Repetitive Action in Wharton's Plots,"  
Judith Saunders, Marist College
2. "Wharton's Art of Ellipsis," Jean Frantz Blackall, Cornell Univ.
3. "Foregrounding the Present: Wharton's Endings," Bette S.  
Weidman, Queens College
4. "Wharton's Water Sprite in *The Custom of The Country*," James  
R. Bailey, Otterbein College

II - WHARTON'S GHOSTS Moderator, Alfred Bendixen, Barnard College  
DRAWING ROOM

1. "Gender Imprisonment and the Preservation of Houses in 'Mr.  
Jones,'" Connie Johnson, Univ. of Michigan
2. "Haunted by Society: Wharton's Ghost Stories," Katherine Kleitz,  
Tufts, Univ.
3. "Where Silence Speaks in Wharton's Ghostly Tales," Anne Fields,  
Univ. of North Carolina at Chapel Hill.
4. "The Gothic Arsenal of Wharton," Margaret P. Murray,  
Fordham Univ.

III - THE DECORATION (AND ENCODING) OF HOUSES, Moderator,  
Susan Koprince, Univ. of North Dakota DINING ROOM

1. "The Decoration of Houses: A Key to Wharton's Fiction," Susan  
Koprince, Univ. of North Dakota
2. "Helter Skelter: Female Sexuality and Space in *Summer*," Cindy  
Dupray, Univ. of California, San Diego
3. "From a Moment's Ornament to the Brick in the Wall:  
Architecture and Meaning in Wharton's Novels," Brigitte Bailey,  
Univ. of New Hampshire
4. "Ward McCallister: The Beau Nash of *The Age of Innocence*,"  
Rhoda Nathan, Hofstra Univ.

IV - FRENCH FEMINISM AND WHARTON'S FICTION, Moderator,  
Constance Post, Iowa State Univ. BOUDOIR

1. "The Age of Innocence as Luce Irigaray's Mimesis," Linette K.  
Davis, Univ. of Arizona
2. "The Specul(ariz)ation of Desire in *The House of Mirth*," Michael  
Fisher, Univ. of Michigan
3. "Language and Gender in 'The Muse's Tragedy,'" M. Denise  
Witzig, Brown Univ.
4. "Subverting the Masculine Economy: *The Age of Innocence*,"  
Nicole Hoffman, Univ. of Utah

Tuesday Evening, June 9

*See*

- 5:00-6:00 p.m. Cash Bar  
6:00-7:30 p.m. Dinner  
7:30-8:30 p.m. Judith Fryer, Univ. of Massachusetts, "Whose Body?  
*Tableaux Vivants, Harems and Other Scenes*"

Wednesday Morning, June 10

- 8:00 - 9:30 a.m. Breakfast  
9:30-10:30 a.m. Annette Zilversmit, Long Island Univ., "All Souls':  
Wharton's Last Haunted House and New Directions  
for Criticism."  
11:00-12:00 a.m. Autograph Party - Book Buying and Signing (Place to  
be announced)

Wednesday Afternoon, June 10

- 12:30-1:30 p.m. Lunch  
2:00 - 3:30 p.m. Optional Tour of Wharton's Lenox

CONFERENCE CO-DIRECTORS

Katherine Joslin  
Iowa State University

Annette Zilversmit  
Long Island University, Brooklyn

Conference Committee of The Edith Wharton Society: Alfred Bendixen, Barnard College; Diane Cox; Eleanor Dwight, The New School; Kathy Fedorko, Middlesex County College; Irene Goldman, Ball State Univ.; Karin Woodruff Jackson, Westbrook College, Portland Me.; Alan Price, Pennsylvania State Univ.; Judith Saunders, Marist College; Carol Schoen, Lehman College of CUNY; Carol Singley, Swarthmore College.

Editorial Assistant, Martine Zilversmit

Conference Committee of The Edith Wharton Restoration: Thomas S. Hayes, President; Scott Marshall, Assistant Director; Joy Hayes, Administrative Assistant.

THE EDITH WHARTON RESTORATION, a non-profit organization which owns The Mount is dedicated to restoring and preserving The Mount for the public. It welcomes Friends of \$25 or more to Box 974, Lenox, MA 01240.

THE EDITH WHARTON SOCIETY is presently located at Long Island University, Department of English, Brooklyn, NY 11201. Yearly membership with semi-annual newsletters is \$5.

(THIS CONFERENCE HAS BEEN PARTIALLY FUNDED BY THE MASSACHUSETTS FOUNDATION FOR HUMANITIES AND PUBLIC POLICY)

*M 5M - Jan 23 - 7<sup>30</sup>  
House Tour M4*